

## **Elk Lake Dr between Commonwealth Pl and Pat Bay Hwy**

**March 09, 2019 To March 14, 2019**



The data presented here is for information purposes only and should not be considered authoritative for construction, geotechnical, engineering, navigational, legal, or other site-specific uses. The information shared is owned by the Transportation Division of the Engineering Department at the District of Saanich. Accuracy is not guaranteed.

Start Date: 11-Mar-19  
 Start Time: 0:22  
 Station ID: C0022-01

**Location 1: Elk Lake Dr between Commonwealth PI and Pat Bay Hwy**

Note: Commonwealth PI and Pat Bay Hwy

DATE:	March 11, 2019		March 12, 2019		March 13, 2019		March 14, 2019		March 15, 2019		WK AVG		WK AVG	HOURLY
	MON		TUE		WED		THURS		FRI				CH 1+2	%
Time:	NB	SB	NB	SB	NB	SB	NB	SB	NB	SB	NB	SB		
12-1 AM	2	1	2	2	2	3					2	2	4	0.1%
1-2 AM	1	2	1	2	0	1					1	2	2	0.0%
2-3 AM	6	3	4	2	1	4					4	3	7	0.1%
3-4 AM	7	10	5	8	7	4					6	7	14	0.3%
4-5 AM	10	32	13	31	13	24					12	29	41	0.8%
5-6 AM	28	50	35	65	46	55					36	57	93	1.9%
6-7 AM	69	144	64	153	66	162					66	153	219	4.4%
7-8 AM	118	263	132	296	123	287					124	282	406	8.1%
8-9 AM	103	244	109	216	98	203					103	221	324	6.5%
9-10 AM	116	218	136	170	120	194					124	194	318	6.4%
10-11 AM	155	191	146	272	128	197					143	220	363	7.3%
11-12 PM	155	169	149	226	121	208					142	201	343	6.9%
12-1 PM	144	184	157	204	151	198					151	195	346	6.9%
1-2 PM	144	198	219	223	138	187					167	203	370	7.4%
2-3 PM	181	271	173	265	199	302					184	279	464	9.3%
3-4 PM	163	204	191	228	168	236					174	223	397	7.9%
4-5 PM	161	219	167	200	176	222					168	214	382	7.6%
5-6 PM	131	160	144	143	116	138					130	147	277	5.5%
6-7 PM	108	110	120	123	107	126					112	120	231	4.6%
7-8 PM	82	65	72	76	82	73					79	71	150	3.0%
8-9 PM	64	65	58	85	67	70					63	73	136	2.7%
9-10 PM	33	31	40	21	42	26					38	26	64	1.3%
10-11 PM	10	15	9	14	22	28					14	19	33	0.7%
11-12 AM	3	7	1	10	10	16					5	11	16	0.3%
<b>LANES</b>	<b>1994</b>	<b>2856</b>	<b>2147</b>	<b>3035</b>	<b>2003</b>	<b>2964</b>					<b>2048</b>	<b>2952</b>	<b>5000</b>	<b>100.0%</b>
<b>TOTAL</b>	<b>4850</b>		<b>5182</b>		<b>4967</b>						<b>5000</b>			
	MON		TUE		WED		THURS		FRI		WK AVG			

PEAK HOUR					TOTAL VEHICALS-PEAK PERIODS		2 HOUR PEAK INTERVALS						
MAX. 7 - 9 am PEAK HOUR	406	⇒	8.1%	between 7-8 AM	2078	⇒	6 HR TOTAL	<b>2 HR AM (7 - 9 AM)</b>					
MAX. 7 - 11 am PEAK HOUR	406	⇒	8.1%	between 7-8 AM	1390	⇒	4 HR TOTAL	VEH / HR	VEH / 2HR	2 HR %			
MAX. 11 am - 1 pm PEAK HOUR	346	⇒	6.9%	between 12-1 PM				7-8 AM	406	731	14.6%		
MAX. 11 am - 3 pm PEAK HOUR	464	⇒	9.3%	between 2-3 PM				8-9 AM	324				
MAX. 4 - 6 pm PEAK HOUR	382	⇒	7.6%	between 4-5 PM				<b>2 HR NOON (11 - 1 PM)</b>					
MAX. 3 - 6 pm PEAK HOUR	397	⇒	7.9%	between 3-4 PM				VEH / HR	VEH / 2HR	2 HR %			
								11-12 PM	343	689	13.8%		
								12-1 PM	346				
								<b>2 HR PM (4 - 6 PM)</b>					
								VEH / HR	VEH / 2HR	2 HR %			
								4-5 PM	382	659	13.2%		
								5-6 PM	277				

# Elk Lake Dr between Commonwealth PI and Pat Bay Hwy

Northbound

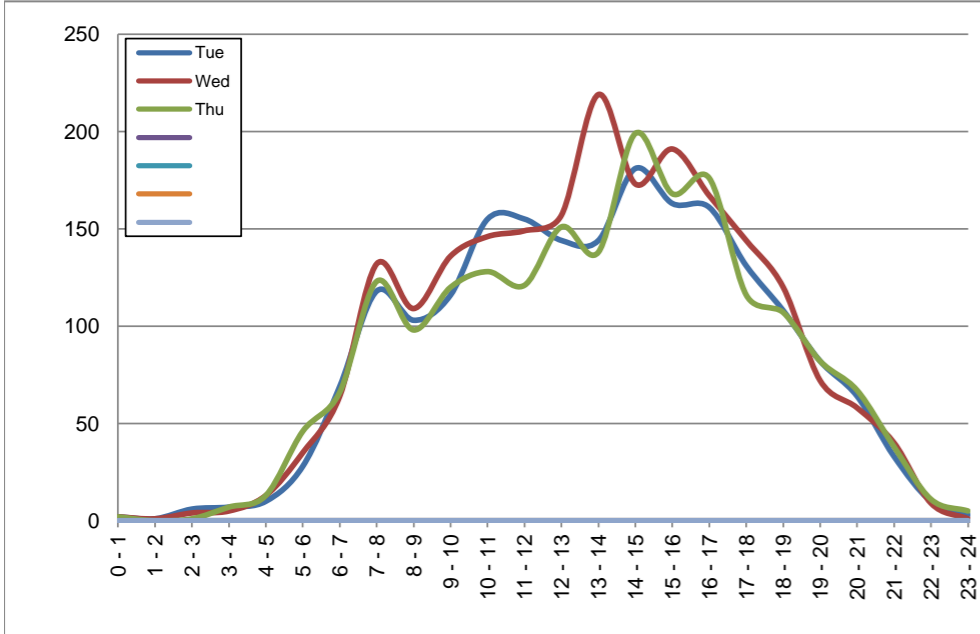
March 12, 2019 to March 14, 2019

## Hourly Volumes

Time Period	Tue	Wed	Thu				
	Mar 12	Mar 13	Mar 14				
0 - 1	2	2	2				
1 - 2	1	1	0				
2 - 3	6	4	1				
3 - 4	7	5	7				
4 - 5	10	13	13				
5 - 6	28	35	46				
6 - 7	69	64	66				
7 - 8	118	132	123				
8 - 9	103	109	98				
9 - 10	116	136	120				
10 - 11	155	146	128				
11 - 12	155	149	121				
12 - 13	144	157	151				
13 - 14	144	219	138				
14 - 15	181	173	199				
15 - 16	163	191	168				
16 - 17	161	167	176				
17 - 18	131	144	116				
18 - 19	108	120	107				
19 - 20	82	72	82				
20 - 21	64	58	67				
21 - 22	33	40	38				
22 - 23	10	9	11				
23 - 24	3	1	5				
<b>Day Total</b>	<b>1994</b>	<b>2147</b>	<b>1983</b>				

## 15-Minute Volumes

Time Start	Tue	Wed	Thu				
	Mar 12	Mar 13	Mar 14				
0:00	0	0	1				
0:15	0	0	1				
0:30	1	0	0				
0:45	1	2	0				
1:00	0	1	0				
1:15	0	0	0				
1:30	0	0	0				
1:45	1	0	0				
2:00	1	0	0				
2:15	2	2	1				
2:30	3	1	0				
2:45	0	1	0				
3:00	2	1	1				
3:15	2	4	5				
3:30	1	0	0				
3:45	2	0	1				
4:00	1	1	3				
4:15	1	3	2				
4:30	3	2	5				
4:45	5	7	3				
5:00	5	3	7				
5:15	8	10	16				
5:30	9	5	10				
5:45	6	17	13				
6:00	14	12	17				
6:15	15	13	12				
6:30	18	17	11				
6:45	22	22	26				
7:00	25	26	27				
7:15	25	36	30				
7:30	37	44	45				
7:45	31	26	21				
8:00	25	29	27				
8:15	30	22	14				
8:30	21	25	28				
8:45	27	33	29				
9:00	39	40	38				
9:15	23	31	24				
9:30	27	36	24				
9:45	27	29	34				
10:00	36	30	33				
10:15	36	39	23				
10:30	43	39	29				
10:45	40	38	43				
11:00	45	49	29				
11:15	35	32	35				
11:30	40	39	25				
11:45	35	29	32				
12:00	30	33	38				
12:15	37	36	33				
12:30	40	49	41				
12:45	37	39	39				
13:00	35	72	29				
13:15	35	52	37				
13:30	34	47	39				
13:45	40	48	33				
14:00	44	28	37				
14:15	52	54	64				
14:30	50	45	57				
14:45	35	46	41				
15:00	39	50	48				
15:15	41	56	44				
15:30	52	43	45				
15:45	31	42	31				
16:00	44	49	41				
16:15	49	40	52				
16:30	34	41	36				
16:45	34	37	47				
17:00	40	46	29				
17:15	29	36	33				
17:30	28	32	29				
17:45	34	30	25				
18:00	40	43	24				
18:15	25	26	37				
18:30	20	19	29				
18:45	23	32	17				
19:00	22	26	28				
19:15	28	18	23				
19:30	16	14	16				
19:45	16	14	15				
20:00	16	17	20				
20:15	18	18	17				
20:30	15	16	17				
20:45	15	7	13				
21:00	16	22	11				
21:15	7	9	13				
21:30	4	5	4				
21:45	6	4	10				
22:00	2	4	5				
22:15	2	3	3				
22:30	3	2	2				
22:45	3	0	1				
23:00	2	1	2				
23:15	0	0	1				
23:30	0	0	1				
23:45	1	0	1				



Site notes:

# Elk Lake Dr between Commonwealth PI and Pat Bay Hwy

Southbound

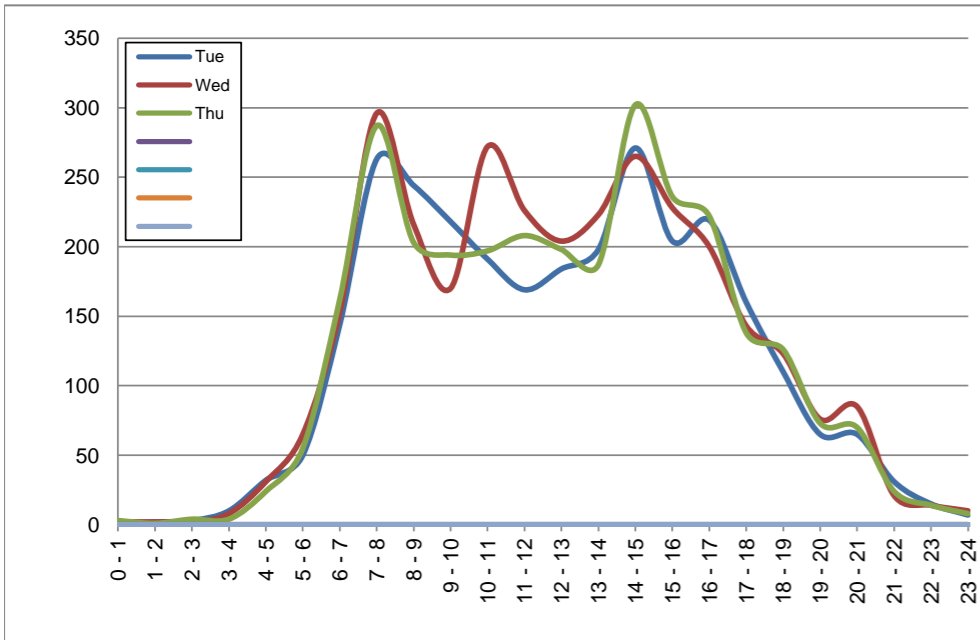
March 12, 2019 to March 14, 2019

## Hourly Volumes

Time Period	Tue	Wed	Thu			
	Mar 12	Mar 13	Mar 14			
0 - 1	1	2	3			
1 - 2	2	2	1			
2 - 3	3	2	4			
3 - 4	10	8	4			
4 - 5	32	31	24			
5 - 6	50	65	55			
6 - 7	144	153	162			
7 - 8	263	296	287			
8 - 9	244	216	203			
9 - 10	218	170	194			
10 - 11	191	272	197			
11 - 12	169	226	208			
12 - 13	184	204	198			
13 - 14	198	223	187			
14 - 15	271	265	302			
15 - 16	204	228	236			
16 - 17	219	200	222			
17 - 18	160	143	138			
18 - 19	110	123	126			
19 - 20	65	76	73			
20 - 21	65	85	70			
21 - 22	31	21	24			
22 - 23	15	14	14			
23 - 24	7	10	8			
<b>Day Total</b>	<b>2856</b>	<b>3035</b>	<b>2940</b>			

## 15-Minute Volumes

Time Start	Tue	Wed	Thu				Time Start	Tue	Wed	Thu			
	Mar 12	Mar 13	Mar 14					Mar 12	Mar 13	Mar 14			
0:00	0	1	3				12:00	56	50	54			
0:15	1	0	0				12:15	45	58	51			
0:30	0	1	0				12:30	33	57	55			
0:45	0	0	0				12:45	50	39	38			
1:00	2	2	0				13:00	61	56	53			
1:15	0	0	1				13:15	47	44	43			
1:30	0	0	0				13:30	40	45	41			
1:45	0	0	0				13:45	50	78	50			
2:00	2	0	0				14:00	54	70	57			
2:15	0	2	2				14:15	58	70	78			
2:30	0	0	0				14:30	74	67	94			
2:45	1	0	2				14:45	85	58	73			
3:00	2	2	0				15:00	51	55	58			
3:15	1	1	1				15:15	49	59	61			
3:30	3	0	0				15:30	50	55	62			
3:45	4	5	3				15:45	54	59	55			
4:00	6	5	3				16:00	52	53	61			
4:15	5	7	7				16:15	70	55	55			
4:30	10	5	6				16:30	47	50	63			
4:45	11	14	8				16:45	50	42	43			
5:00	10	11	13				17:00	45	29	33			
5:15	11	7	13				17:15	32	37	37			
5:30	10	18	7				17:30	36	34	30			
5:45	19	29	22				17:45	47	43	38			
6:00	24	32	17				18:00	36	41	36			
6:15	29	32	38				18:15	32	38	40			
6:30	37	33	33				18:30	21	29	23			
6:45	54	56	74				18:45	21	15	27			
7:00	40	57	53				19:00	24	17	20			
7:15	55	59	68				19:15	22	25	14			
7:30	70	82	68				19:30	10	18	17			
7:45	98	98	98				19:45	9	16	22			
8:00	74	81	74				20:00	36	26	19			
8:15	59	54	41				20:15	17	25	14			
8:30	58	44	44				20:30	8	24	23			
8:45	53	37	44				20:45	4	10	14			
9:00	50	30	53				21:00	8	6	5			
9:15	52	53	40				21:15	12	3	7			
9:30	60	47	53				21:30	6	4	7			
9:45	56	40	48				21:45	5	8	5			
10:00	41	60	44				22:00	8	5	4			
10:15	46	53	54				22:15	0	1	2			
10:30	49	80	41				22:30	6	5	3			
10:45	55	79	58				22:45	1	3	5			
11:00	49	66	59				23:00	2	4	2			
11:15	34	63	50				23:15	2	3	3			
11:30	48	45	44				23:30	2	2	2			
11:45	38	52	55				23:45	1	1	1			



Site notes:

# Vehicle Speed Summary

Saanich Engineering Department

Count Id: C0022-01

Filename: Elk Lake Dr between Commonwealth Pl and Pat Bay Hwy-Mar-2019.xlsm

**Location:** Elk Lake Dr between Commonwealth Pl and Pat Bay Hwy

Note: Commonwealth Pl and Pat Bay Hwy

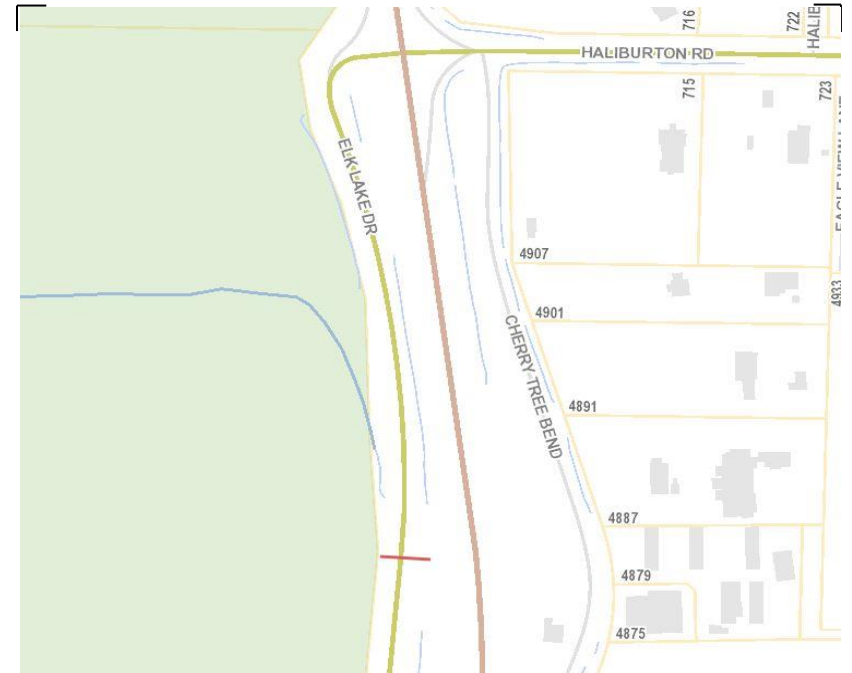
Direction: **North-South**

Dates: **March 09, 2019 To March 14, 2019**

*Filtered data*

AVG. SPEED	<b>36</b> mph	<b>58</b> km/h
50 % SPEED	<b>36</b> mph	<b>58</b> km/h
85 % SPEED	<b>41</b> mph	<b>66</b> km/h
95 % SPEED	<b>44</b> mph	<b>71</b> km/h

Location Map



**Elk Lake Dr between Commonwealth Pl and Pat Bay Hwy**

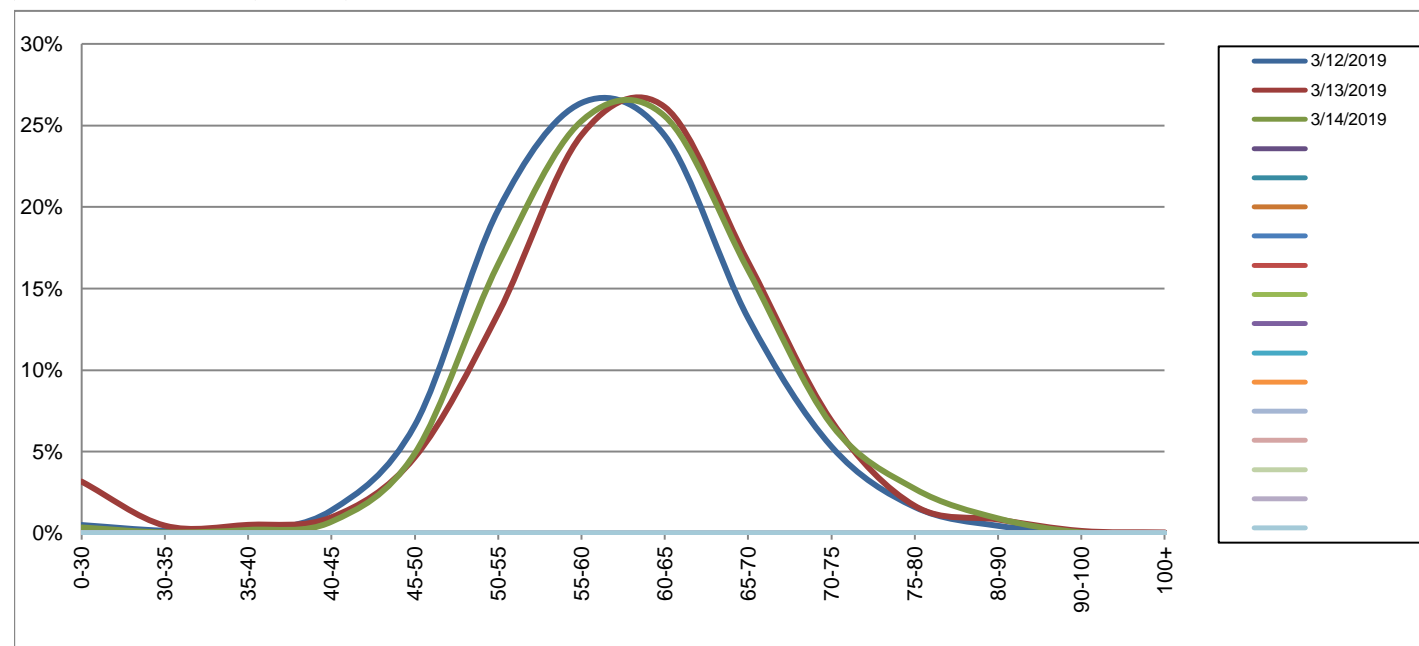
Northbound

March 12, 2019 to March 14, 2019

Daily Speed Bin Percentages															Daily Speed Bin Volumes														Total	Avg.
Bin #	1	2	3	4	5	6	7	8	9	10	11	12	13	14	1	2	3	4	5	6	7	8	9	10	11	12	13	14	Volume	Speed
Bin Speeds	0-30	30-35	35-40	40-45	45-50	50-55	55-60	60-65	65-70	70-75	75-80	80-90	90-100	100+	0-30	30-35	35-40	40-45	45-50	50-55	55-60	60-65	65-70	70-75	75-80	80-90	90-100	100+		
3/12/2019	0.5%	0.2%	0.2%	1.4%	6.6%	19.8%	26.4%	24.4%	13.2%	5.3%	1.6%	0.5%	0.1%	0.0%	10	3	3	28	132	395	526	486	263	106	32	9	1	0	1994	59
3/13/2019	3.2%	0.5%	0.5%	1.0%	4.7%	13.5%	24.4%	26.1%	16.6%	6.9%	1.7%	0.8%	0.1%	0.0%	68	10	11	21	100	289	524	561	357	148	36	18	3	1	2147	59
3/14/2019	0.4%	0.1%	0.2%	0.7%	4.9%	16.5%	25.3%	25.6%	16.1%	6.7%	2.7%	0.9%	0.1%	0.0%	7	1	4	14	97	327	501	507	320	132	54	18	1	0	1983	61
<b>Total</b>	1.4%	0.2%	0.3%	1.0%	5.4%	16.5%	25.3%	25.4%	15.3%	6.3%	2.0%	0.7%	0.1%	0.0%	85	14	18	63	329	1011	1551	1554	940	386	122	45	5	1	6124	60

**Speed Data Summary**

Bin #	1	2	3	4	5	6	7	8	9	10	11	12	13	14	Total
Bin Speeds	0-30	30-35	35-40	40-45	45-50	50-55	55-60	60-65	65-70	70-75	75-80	80-90	90-100	100+	
Survey Total	85	14	18	63	329	1011	1551	1554	940	386	122	45	5	1	6124
% Total	1.4%	0.2%	0.3%	1.0%	5.4%	16.5%	25.3%	25.4%	15.3%	6.3%	2.0%	0.7%	0.1%	0.0%	100%
Accumulated %	1.4%	1.6%	1.9%	2.9%	8.3%	24.8%	50.1%	75.5%	90.9%	97.2%	99.2%	99.9%	100.0%	100%	
Inverse Accum. %	98.6%	98.4%	98.1%	97.1%	91.7%	75.2%	49.9%	24.5%	9.1%	2.8%	0.8%	0.1%	0.0%	0.0%	
Average Speed	60 KM/H														



Site notes:

**Elk Lake Dr between Commonwealth PI and Pat Bay Hwy**

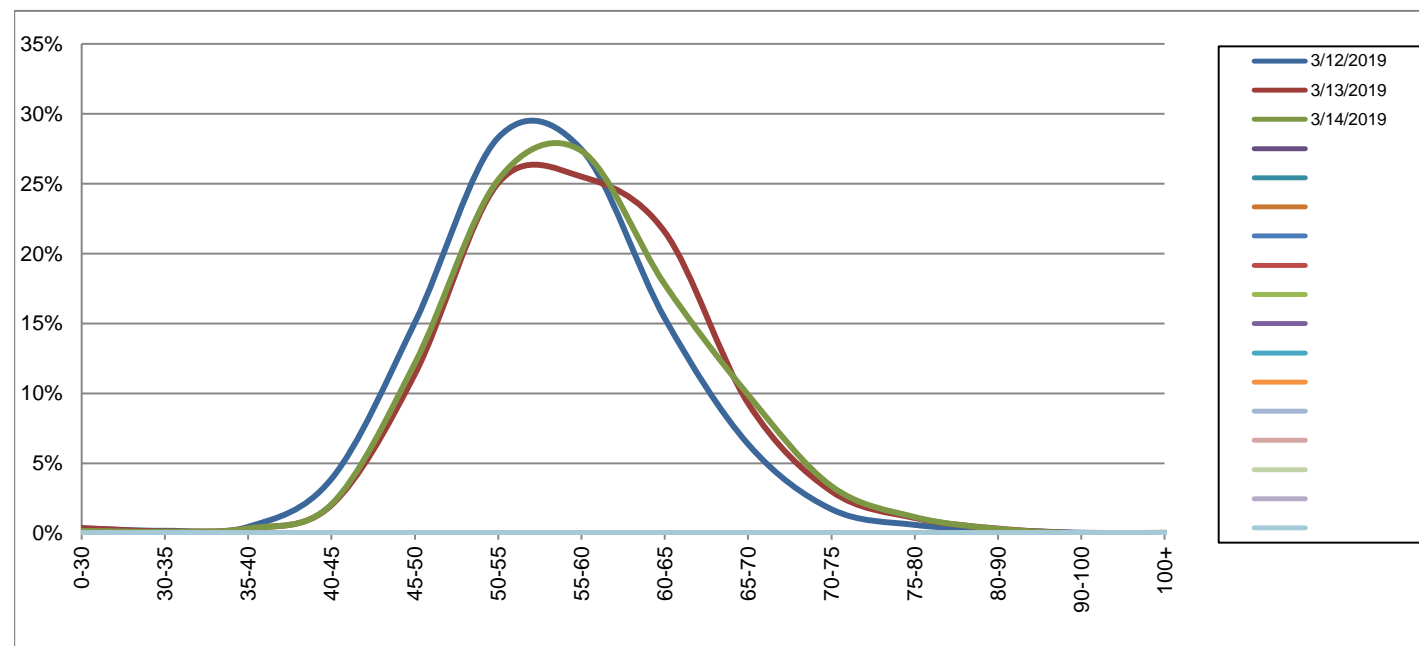
Southbound

March 12, 2019 to March 14, 2019

Daily Speed Bin Percentages															Daily Speed Bin Volumes														Total	Avg.
Bin #	1	2	3	4	5	6	7	8	9	10	11	12	13	14	1	2	3	4	5	6	7	8	9	10	11	12	13	14	Volume	Speed
Bin Speeds	0-30	30-35	35-40	40-45	45-50	50-55	55-60	60-65	65-70	70-75	75-80	80-90	90-100	100+	0-30	30-35	35-40	40-45	45-50	50-55	55-60	60-65	65-70	70-75	75-80	80-90	90-100	100+		
3/12/2019	0.4%	0.2%	0.5%	3.9%	15.1%	28.3%	27.5%	15.4%	6.4%	1.7%	0.6%	0.2%	0.0%	0.0%	10	5	13	111	430	808	784	439	182	49	17	7	1	0	2856	56
3/13/2019	0.4%	0.1%	0.3%	2.0%	11.4%	25.0%	25.5%	21.5%	9.3%	3.0%	1.1%	0.3%	0.0%	0.0%	11	4	10	61	345	760	774	654	282	91	33	10	0	0	3035	57
3/14/2019	0.2%	0.1%	0.3%	2.1%	12.1%	25.3%	27.3%	17.8%	9.9%	3.4%	1.2%	0.3%	0.0%	0.0%	5	3	10	61	357	743	804	523	291	99	34	9	0	1	2940	57
<b>Total</b>	<b>0.3%</b>	<b>0.1%</b>	<b>0.4%</b>	<b>2.6%</b>	<b>12.8%</b>	<b>26.2%</b>	<b>26.7%</b>	<b>18.3%</b>	<b>8.5%</b>	<b>2.7%</b>	<b>1.0%</b>	<b>0.3%</b>	<b>0.0%</b>	<b>0.0%</b>	<b>26</b>	<b>12</b>	<b>33</b>	<b>233</b>	<b>1132</b>	<b>2311</b>	<b>2362</b>	<b>1616</b>	<b>755</b>	<b>239</b>	<b>84</b>	<b>26</b>	<b>1</b>	<b>1</b>	<b>8831</b>	<b>57</b>

**Speed Data Summary**

Bin #	1	2	3	4	5	6	7	8	9	10	11	12	13	14	Total
Bin Speeds	0-30	30-35	35-40	40-45	45-50	50-55	55-60	60-65	65-70	70-75	75-80	80-90	90-100	100+	
Survey Total	26	12	33	233	1132	2311	2362	1616	755	239	84	26	1	1	8831
% Total	0.3%	0.1%	0.4%	2.6%	12.8%	26.2%	26.7%	18.3%	8.5%	2.7%	1.0%	0.3%	0.0%	0.0%	100%
Accumulated %	0.3%	0.4%	0.8%	3.4%	16.3%	42.4%	69.2%	87.5%	96.0%	98.7%	99.7%	100.0%	100.0%	100%	
Inverse Accum. %	99.7%	99.6%	99.2%	96.6%	83.7%	57.6%	30.8%	12.5%	4.0%	1.3%	0.3%	0.0%	0.0%	0.0%	
Average Speed	57 KM/H														



Site notes:

**Elk Lake Dr between Commonwealth PI and Pat Bay Hwy**

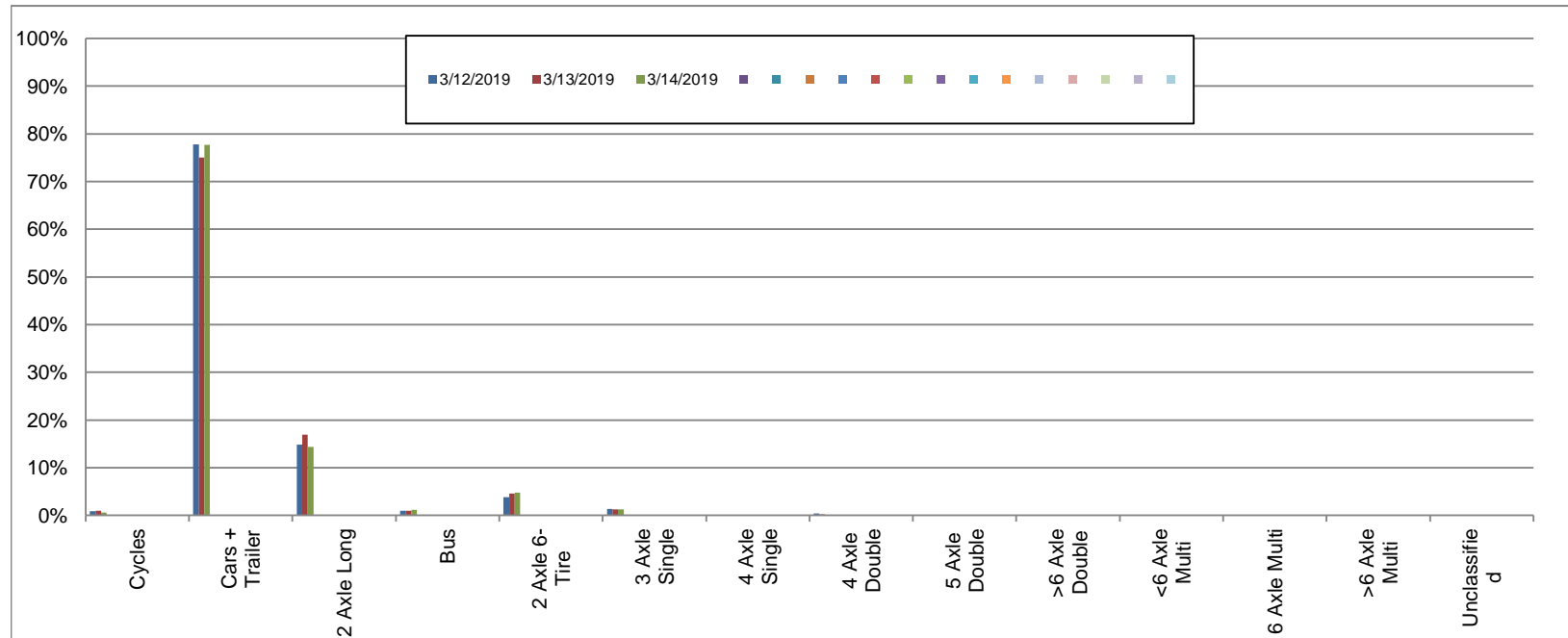
Northbound

March 12, 2019 to March 14, 2019

Daily Class Bin Percentages															Daily Class Bin Volumes														
Bin #	1	2	3	4	5	6	7	8	9	10	11	12	13	14	1	2	3	4	5	6	7	8	9	10	11	12	13	14	Total Volume
Bin Class	Cycles	Cars + Trailer	2 Axle Long	Bus	2 Axle 6-Tire	3 Axle Single	4 Axle Single	4 Axle Double	5 Axle Double	>6 Axle Double	<6 Axle Multi	6 Axle Multi	>6 Axle Multi	Unclassified	Cycles	Cars + Trailer	2 Axle Long	Bus	2 Axle 6-Tire	3 Axle Single	4 Axle Single	4 Axle Double	5 Axle Double	>6 Axle Double	<6 Axle Multi	6 Axle Multi	>6 Axle Multi	Unclassified	
3/12/2019	0.9%	77.8%	14.8%	1.0%	3.8%	1.4%	0.0%	0.4%	0.0%	0.0%	0.0%	0.0%	0.0%	0.0%	17	1551	295	20	76	27	0	8	0	0	0	0	0	0	1994
3/13/2019	1.0%	75.1%	16.9%	1.0%	4.6%	1.2%	0.0%	0.2%	0.0%	0.0%	0.0%	0.0%	0.0%	0.0%	21	1612	363	21	99	26	0	5	0	0	0	0	0	0	2147
3/14/2019	0.6%	77.7%	14.4%	1.2%	4.8%	1.2%	0.0%	0.2%	0.0%	0.0%	0.0%	0.0%	0.0%	0.0%	12	1541	285	23	95	24	0	3	0	0	0	0	0	0	1983
<b>Total</b>	<b>0.8%</b>	<b>76.8%</b>	<b>15.4%</b>	<b>1.0%</b>	<b>4.4%</b>	<b>1.3%</b>	<b>0.0%</b>	<b>0.3%</b>	<b>0.0%</b>	<b>0.0%</b>	<b>0.0%</b>	<b>0.0%</b>	<b>0.0%</b>	<b>0.0%</b>	<b>50</b>	<b>4704</b>	<b>943</b>	<b>64</b>	<b>270</b>	<b>77</b>	<b>0</b>	<b>16</b>	<b>0</b>	<b>0</b>	<b>0</b>	<b>0</b>	<b>0</b>	<b>0</b>	<b>6124</b>

**Class Data Summary**

Bin #	1	2	3	4	5	6	7	8	9	10	11	12	13	14	Total Volume
Bin Class	Cycles	Cars + Trailer	2 Axle Long	Bus	2 Axle 6-Tire	3 Axle Single	4 Axle Single	4 Axle Double	5 Axle Double	>6 Axle Double	<6 Axle Multi	6 Axle Multi	>6 Axle Multi	Unclassified	Total Volume
<b>Survey Total</b>	50	4704	943	64	270	77	0	16	0	0	0	0	0	0	6124
<b>% Total</b>	0.8%	76.8%	15.4%	1.0%	4.4%	1.3%	0.0%	0.3%	0.0%	0.0%	0.0%	0.0%	0.0%	0.0%	100%
<b>Accumulated %</b>	0.8%	77.6%	93.0%	94.1%	98.5%	99.7%	99.7%	100.0%	100.0%	100.0%	100.0%	100.0%	100.0%	100.0%	
<b>Inv. Accum. %</b>	99.2%	22.4%	7.0%	5.9%	1.5%	0.3%	0.3%	0.0%	0.0%	0.0%	0.0%	0.0%	0.0%	0.0%	



**Classification Descriptions**

Bin #	Bin Description
1	Motorcycles
2	Passenger cars, including those with recreational trailers
3	2-axle pick-ups, vans, and RVs, including those with recreational trailers
4	Buses
5	2-axle, 6-tire single units
6	3-axle single units
7	4-axle single units
8	3-axle or 4-axle double unit
9	5-axle double unit
10	6-, 7-, or 8-axle double unit
11	5-axle multiple unit
12	6-axle multiple unit
13	7-or-more-axle multiple unit
14	Vehicles that could not be classified

Site notes:



**Elk Lake Dr between Commonwealth PI and Pat Bay Hwy**

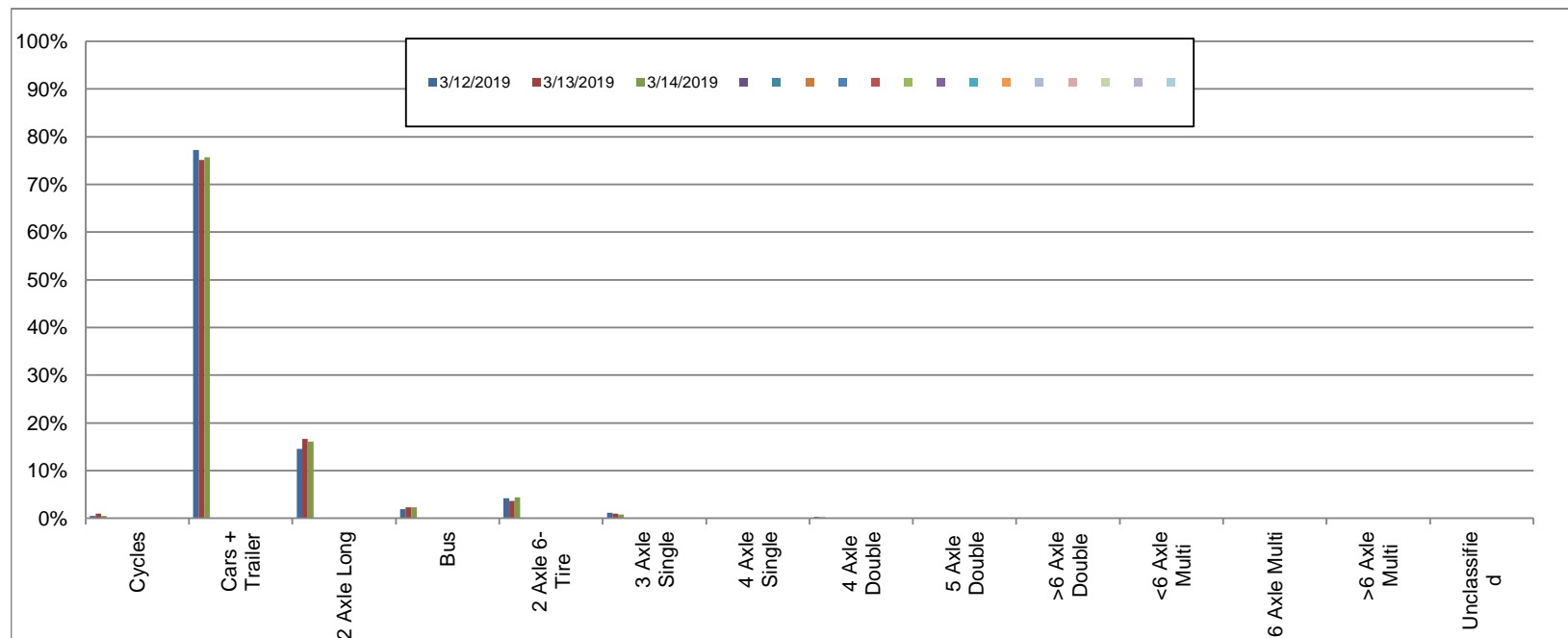
Southbound

March 12, 2019 to March 14, 2019

Daily Class Bin Percentages															Daily Class Bin Volumes															
Bin #	1	2	3	4	5	6	7	8	9	10	11	12	13	14	1	2	3	4	5	6	7	8	9	10	11	12	13	14	Total Volume	
Bin Class	Cycles	Cars + Trailer	2 Axle Long	Bus	2 Axle 6-Tire	3 Axle Single	4 Axle Single	4 Axle Double	5 Axle Double	>6 Axle Double	<6 Axle Multi	6 Axle Multi	>6 Axle Multi	Unclassified	Cycles	Cars + Trailer	2 Axle Long	Bus	2 Axle 6-Tire	3 Axle Single	4 Axle Single	4 Axle Double	5 Axle Double	>6 Axle Double	<6 Axle Multi	6 Axle Multi	>6 Axle Multi	Unclassified		
3/12/2019	0.5%	77.2%	14.6%	2.0%	4.2%	1.1%	0.0%	0.3%	0.0%	0.1%	0.0%	0.0%	0.0%	0.1%	15	2205	416	56	119	32	0	9	0	2	0	0	0	0	2	2856
3/13/2019	1.0%	75.1%	16.6%	2.3%	3.6%	1.0%	0.0%	0.2%	0.1%	0.0%	0.0%	0.0%	0.0%	0.0%	29	2280	504	71	110	30	1	6	3	0	0	0	0	1	3035	
3/14/2019	0.5%	75.7%	16.0%	2.3%	4.4%	0.8%	0.0%	0.1%	0.1%	0.0%	0.0%	0.0%	0.0%	0.0%	15	2226	471	68	130	24	0	3	3	0	0	0	0	0	2940	
<b>Total</b>	<b>0.7%</b>	<b>76.0%</b>	<b>15.8%</b>	<b>2.2%</b>	<b>4.1%</b>	<b>1.0%</b>	<b>0.0%</b>	<b>0.2%</b>	<b>0.1%</b>	<b>0.0%</b>	<b>0.0%</b>	<b>0.0%</b>	<b>0.0%</b>	<b>0.0%</b>	<b>59</b>	<b>6711</b>	<b>1391</b>	<b>195</b>	<b>359</b>	<b>86</b>	<b>1</b>	<b>18</b>	<b>6</b>	<b>2</b>	<b>0</b>	<b>0</b>	<b>0</b>	<b>3</b>	<b>8831</b>	

**Class Data Summary**

Bin #	1	2	3	4	5	6	7	8	9	10	11	12	13	14	Total Volume
Bin Class	Cycles	Cars + Trailer	2 Axle Long	Bus	2 Axle 6-Tire	3 Axle Single	4 Axle Single	4 Axle Double	5 Axle Double	>6 Axle Double	<6 Axle Multi	6 Axle Multi	>6 Axle Multi	Unclassified	Total Volume
<b>Survey Total</b>	59	6711	1391	195	359	86	1	18	6	2	0	0	0	3	8831
<b>% Total</b>	0.7%	76.0%	15.8%	2.2%	4.1%	1.0%	0.0%	0.2%	0.1%	0.0%	0.0%	0.0%	0.0%	0.0%	100%
<b>Accumulated %</b>	0.7%	76.7%	92.4%	94.6%	98.7%	99.7%	99.7%	99.9%	99.9%	100.0%	100.0%	100.0%	100.0%	100.0%	
<b>Inv. Accum. %</b>	99.3%	23.3%	7.6%	5.4%	1.3%	0.3%	0.3%	0.1%	0.1%	0.0%	0.0%	0.0%	0.0%	0.0%	



**Classification Descriptions**

Bin #	Bin Description
1	Motorcycles
2	Passenger cars, including those with recreational trailers
3	2-axle pick-ups, vans, and RVs, including those with recreational trailers
4	Buses
5	2-axle, 6-tire single units
6	3-axle single units
7	4-axle single units
8	3-axle or 4-axle double unit
9	5-axle double unit
10	6-, 7-, or 8-axle double unit
11	5-axle multiple unit
12	6-axle multiple unit
13	7-or-more-axle multiple unit
14	Vehicles that could not be classified

Site notes: